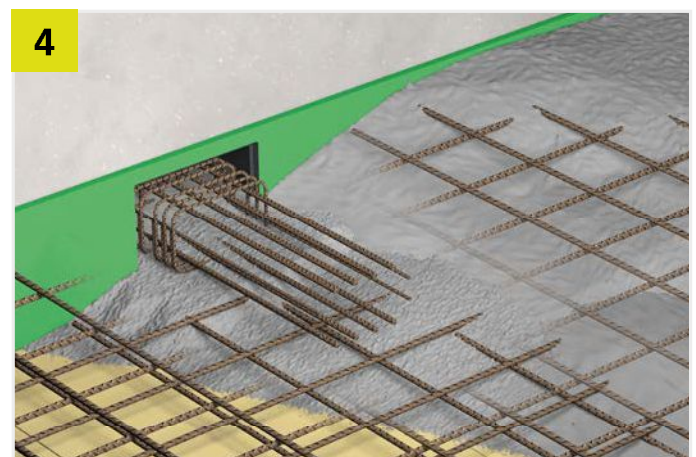
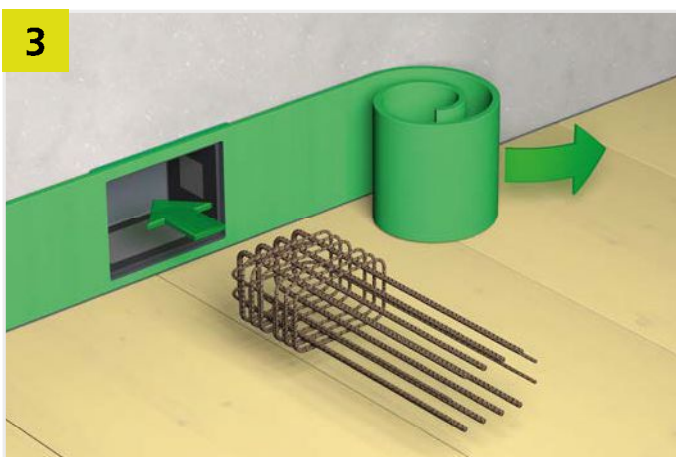
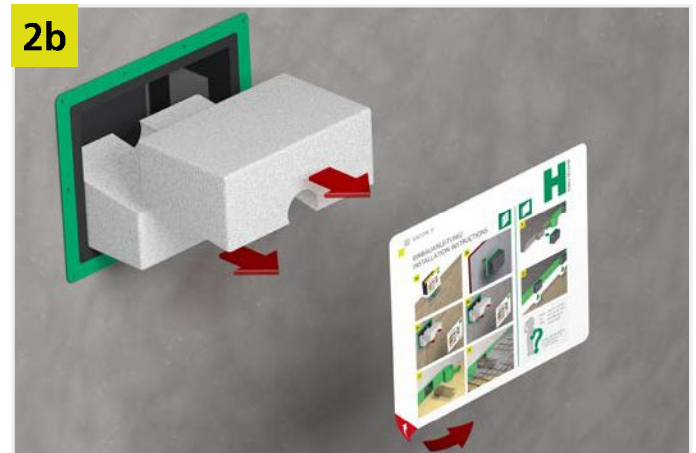
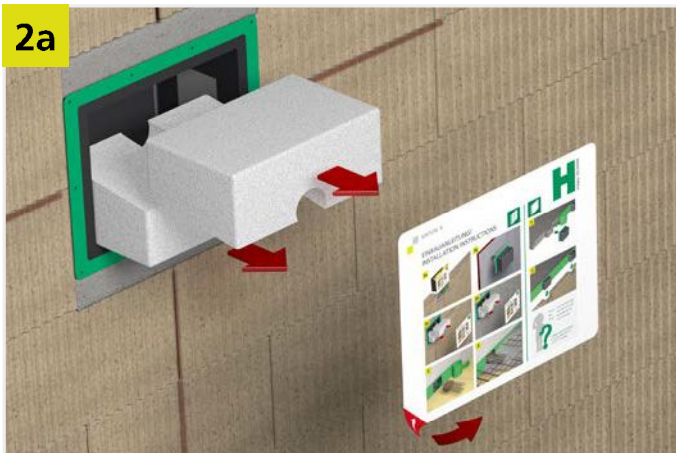
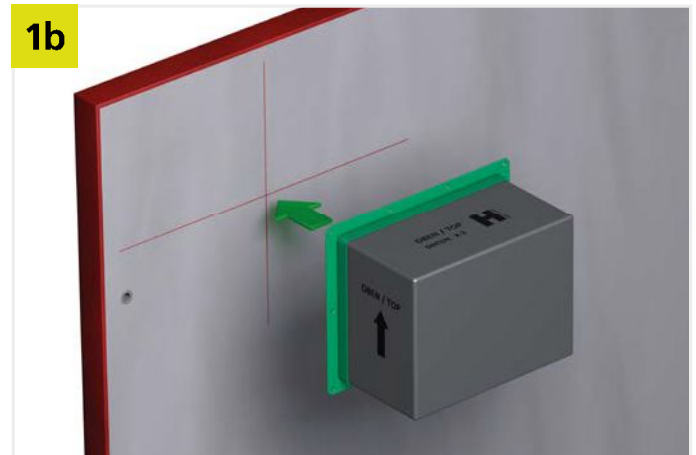


INSTALLATION INSTRUCTIONS

INSTALLATION INSTRUCTIONS FOR SINTON® X IN BRICKWORK WALLS AND FOR IN-SITU CONCRETE CONSTRUCTION



INSTALLATION INSTRUCTIONS

INSTALLATION INSTRUCTIONS SINTON® X FOR PREFABRICATED LANDINGS

